

flexible fittings

US DISTRIBUTOR FOR BFM® GLOBAL LTD.

NO DUST. NO LEAKS. NO TOOLS.

BFM® fitting has transformed manufacturing across the globe & we make it easy to bring BFM® to your facility.



FLEXIBLE SNAP-IN CONNECTOR & SPIGOT SYSTEM



FOOD



PHARMA



MINERAL

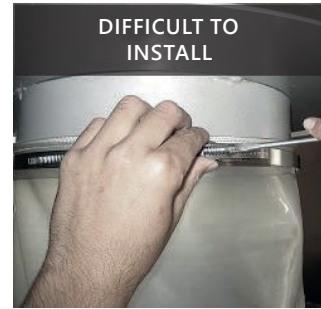


CHEMICAL

WWW.FLEXIBLEFITTINGS.COM

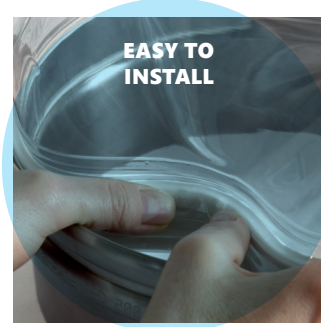
Traditional

HOSE CLAMPED
FABRIC SLEEVE



Transformed

BFM®
INTEGRATED
SYSTEM



	Traditional	Transformed
HYGIENE 	Powder leaks through hose clips Build up between spigot and connector	Leak free – Dust free No crevices to collect product
INSTALLATION 	Inaccurate measurements & product variations create ill-fitting connections Installation problems due to variation in fabrication	Perfect fit every time – only in the correct place
STANDARDIZATION 	Connectors are made any sizes – thousands of stock variations possible	Diameters every 50mm from 100mm to 1650mm Lengths in 50mm increments standardizes stocks
HEALTH & SAFETY 	Tools can damage connectors Installer's hands at risk	Tool free – snap fit Hand safe assembly Clean & transparent Connector gives product flow visibility
EXPLOSION RESISTANT 	Overpressure causes hose clamp failure before connector failure	Seals tighter under pressure Independently explosion tested to 60 kPa +
DOWNTIME 	Slow and difficult to change Longer plant downtime during CIP & Maintenance Connectors wear out faster	Fastest change over in industry guarantees minimal machine interruption More durable connector means less change overs

BFM® Global Products

NON-PERMEABLE CONNECTORS

BFM®'s Seeflex range of connectors are made from clear, ether based polyurethane. Seeflex has no memory and will not fracture with flexing.



SEEFLEX 040E - STRONG, MOST RESILIENT MULTI-PURPOSE CONNECTOR

- Temp. Range: -25°C to 110°C (-13°F to 230°F) • Surge Temp: 120°C (248°F)
- Surface Resistivity: 1010 Ω (Tested to ASTM D-257)
- Atex Compliant: IBExU tested
- Regulations: FDA CFR 177.1680. & 177.2600 (EC) 1935/2004, 2023–2006 & 10/2011, USDA & 3A (20-)



SEEFLEX 020E - LIGHTWEIGHT & FLEXIBLE, IDEAL FOR WEIGHSCALE APPLICATIONS

- Temp Range: -25°C to 80°C (13°F to 176°F) • Surge Temp: 100°C (212°F)
- Surface Resistivity: 1010 Ω (Tested to ASTM D-257)
- Atex Compliant: IBExU tested.
- Regulations: FDA CFR 177.1680. & 177.2600, (EC) 1935/2004, 2023–2006 & 10/2011, USDA & 3A (20-)



SEEFLEX 040AS - DESIGNED TO DISSIPATE STATIC, IDEAL FOR POTENTIALLY EXPLOSIVE AREAS

- Temp. Range: -25°C to 95°C (-13°F to 203°F) • Surge Temp: 100°C (212°F)
- Surface Resistivity: 108 Ω (very good at dissipating static - Tested to ASTM D-257)
- Clear ether based polyurethane with antistatic infusion
- Regulations: FDA CFR 177.1680. & 177.2600



SEEFLEX 060ES - SUPERIOR STRENGTH FOR OVER-PRESSURE SITUATIONS

- Temp. Range: -25°C to 120°C (-13°F to 248°F) • Surface Resistivity: 1010 Ω (Tested to ASTM D-257)
- Ether based polyurethane with internally bonded polyester scrim
- Used for continuous pressure situations up to 1.3 bar
- Regulations: FDA CFR 177.1680. & 177.2600, (EC) 1935/2004, 2023–2006 & 10/2011



FLEXI - SEEFLEX + WIRE COIL - IDEAL FOR BAG FEEDERS & FILLING HEADS

- Temp Range: -20°C to 85°C (-4°F to 185°F) • Approx compression ratio: 3:1
- Also available as Flexi-Light (more flexible coil) & Flexi-Earthed with terminal lugs attached to coil ends
- Regulations: FDA CFR 177.1680, 21 CFR 175.105 (adhesives) & 177.2600, (EC) 1935/2004, 2023–2006, USDA & 3A (20-27)



TEFLEX NP (NON-PERMEABLE) - PTFE LAMINATE FOR HIGH TEMPERATURE & CHEMICALS

- Maximum Operating Temp: 300°C (572°F) • Surge Temp: 316°C (600°F)
- Teflex NP can be used on products across the full pH scale (caustic/acid products will not effect Teflex NP)
- Designed to dissipate electrical charge - Surface Resistivity: 106 Ohms
- Regulations: FDA CFR 177.150 & CFR 178.3297, (EC) 1935/2004, 10/2011

WOVEN CONNECTORS



LM3 - 100% WOVEN POLYPROPYLENE - BREATHABLE & SUITABLE FOR LOW TEMPERATURES

- Temp. Range: -70°C to 94°C (-94°F to 201°F) • Surge Temp: 107°C (225°F)
- Air Permeability: 13 (cm³/cm²/sec@125Pa) 25 (ft³/ft²/min@0.5" wg)
- LM3 fulfils food contact requirements: Directives 1935/2004 and 10/2011, FDA certified for food contact



LM4 - 100% WOVEN POLYESTER - SUITABLE FOR HIGHER TEMPERATURES

- Maximum Operating Temp: 130°C (266°F) continuous
- Surge Temp: 150°C (302°F)
- Air Permeability: 0.4 (cm³/cm²/sec@125Pa) 0.8 (ft³/ft²/min@0.5" wg)
- LM4 fulfils food contact requirements: Directives 1935/2004 and 10/2011 FDA CFR21, part 177.2800



TEFLEX - PURE WOVEN PTFE - HIGH TEMPERATURE & CHEMICAL RESISTANT

- Maximum Operating Temp: 260°C (500°F) • Surge Temp: 280°C (536°F)
- Air Permeability: 0.3 (cm³/cm²/sec@125Pa) 0.5 (ft³/ft²/min@0.5" wg)
- Teflex can be used on products across the full PH scale (either caustic or acid)
- Regulation: FDA 21CFR 177.1550

IN ADDITION TO THE ABOVE RANGE, BFM® OFFERS THE FOLLOWING PRODUCTS:



flexible fittings

WWW.FLEXIBLEFITTINGS.COM

IN-HOUSE ENGINEERING & CUSTOM FABRICATION

Need a BFM® 316SS spigot reduced to tri clamp fitting and electropolished to Pharmaceutical / Nutraceutical grade? Our in-house engineers and trained application experts can design & fabricate customized solutions.



BFM®
SPIGOT
CUSTOMIZED.



We keep your spares on our shelves at no extra charge. Get non-standard BFM® connectors in days, not weeks.



BFM® experts review your application to select the right BFM® connector for your process. Have a tricky application? We can help.



We carry one of the largest BFM® connector & spigot inventory at Houston. Most standard parts can ship same day.



Let us customize your solution. We can modify BFM® spigot with 150# drilled flanges, stub with Morris type couplings, Jacob flanges & more.