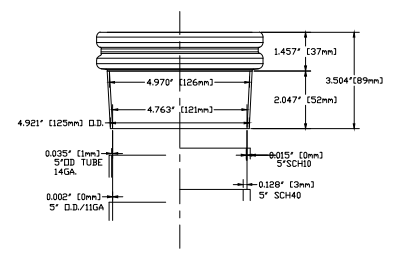
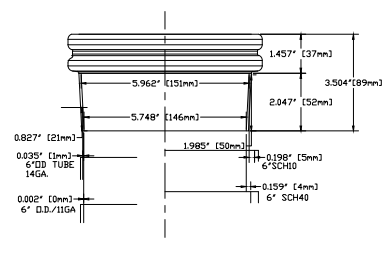


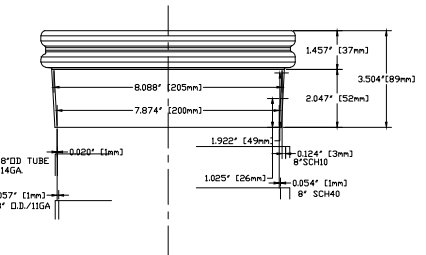
100MM (4")



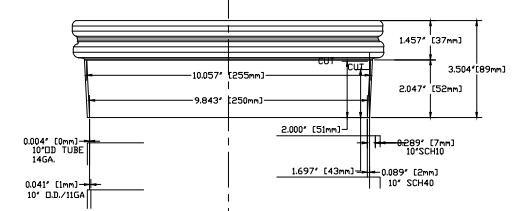
125MM (5")



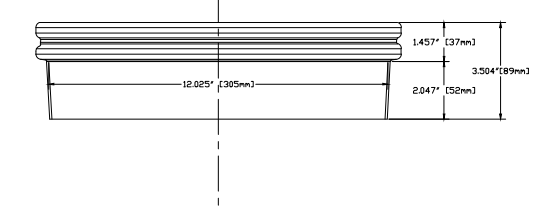
150MM (6")



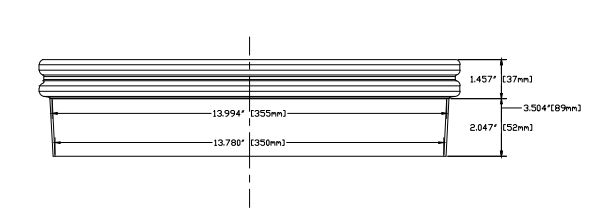
200MM (8")



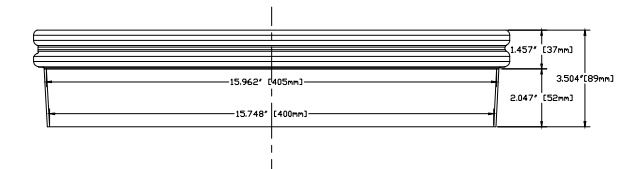
250MM (10")



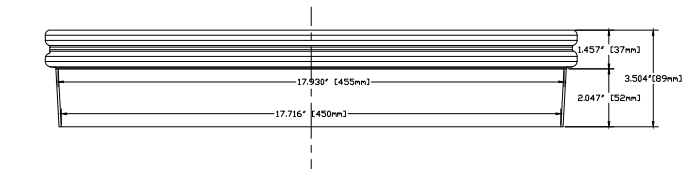
300MM (12")



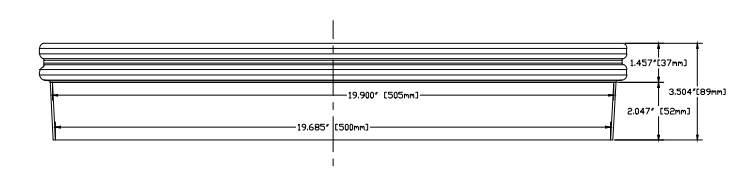
350MM (14")



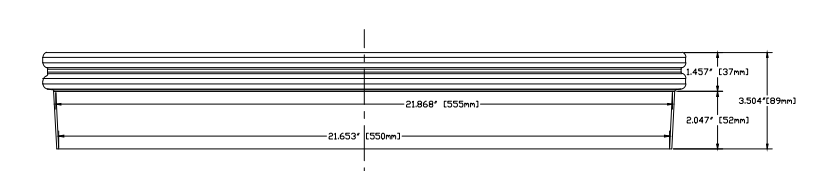
400MM (16")



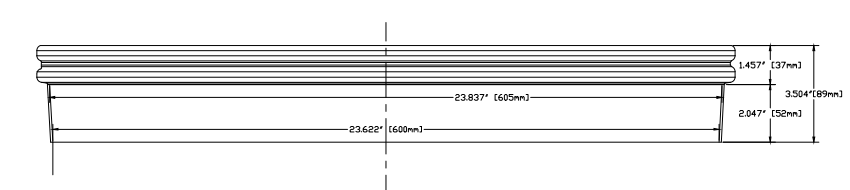
450MM (18")



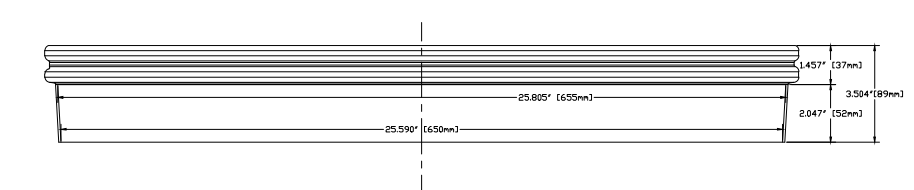
500MM (20")



550MM (22")



600MM (24")



650MM (26")

ARL PRODUCTS LLC
 335 Pennbriht Dr. # 130,
 Houston, TX 77090
 281-203-8577

REVISIONS				
NO.	BY	DESCRIPTION	DATE	APPROVED
1	RH	corrected mm measurements	02/19	HS
2	RH	updated in. measurements to match new mm	12/20	HS

COPYRIGHT © 2014
 The material and design information contained herein is exclusive property of ARLP. All partial or total reproductions are prohibited without a written notice from ARLP. All information is confidential and may not be used by or disclosed to unauthorized personnel without a written consent of ARL PRODUCTS, LLC.

ARL PRODUCTS, LLC HOUSTON, TX			
TITLE SPIGOT CUT LINE DETAIL BFM CONNECTOR			
DRAWN BY BV	DATE 8/25/14	ARL PRODUCTS PROJECT NO. XXX	DWG. NO. REFERENCE DRAWING
APPROVED BY HLS	DATE 8/25/14	SCALE N/A	CUSTOMER JOB/P.O. NO. XXX
REV. 2		SHEET 1 of 1	