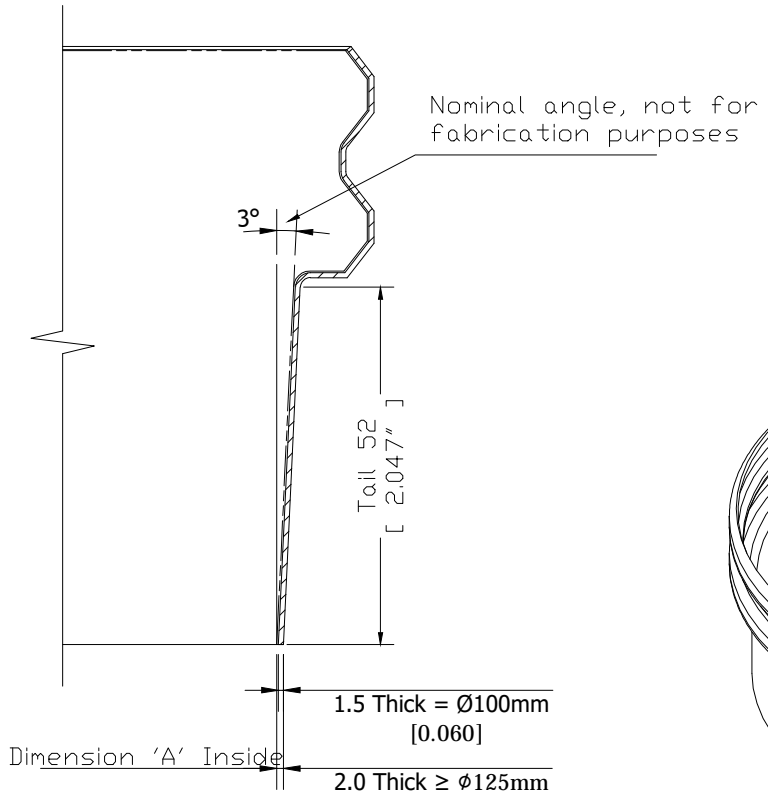
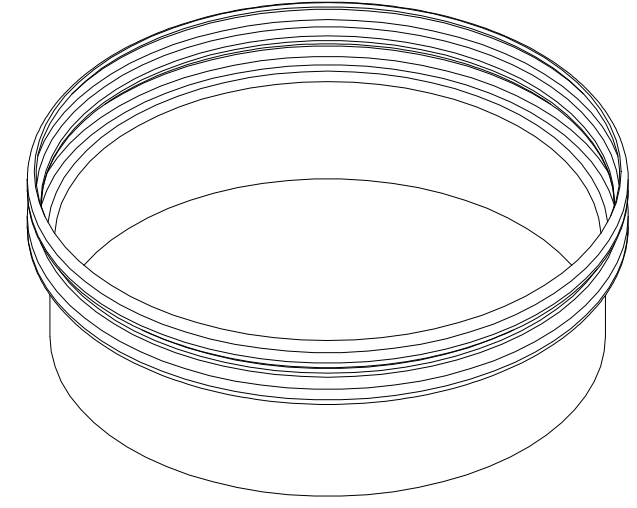


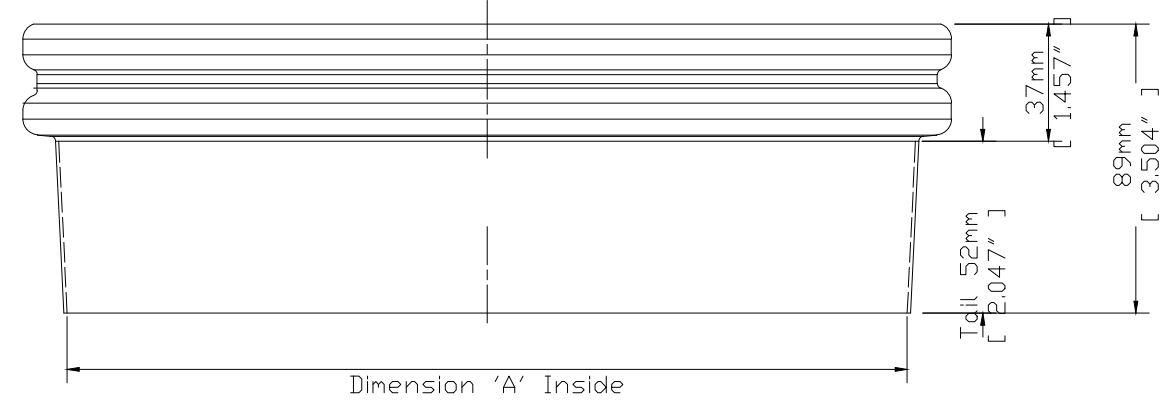
**Plan**



**Section A-A**  
Scale (1 : 1)



**Isometric Representation**  
Scale (1 : 3)



**Elevation**

Dimension 'A' (Diameter $\phi$ )	
Nominal mm	Nominal inches
*100	*3.937
*125	*4.921
*150	*5.905
200	7.874
250	9.842
300	11.811
350	13.779
400	15.748
450	17.716
500	19.685
550	21.653
600	23.622
650	25.590

\*  
These three sizes of BFM spigots are sized to fit standard tube which is measured externally. All other BFM spigots are measured internally to accommodate nominal bore standard pipe which is measured internally.

**NOTE:**  
Section A-A is common to all spigots in the BFM Connector Range.

Larger sizes available in increments of 50mm [2.0"] on request. Please contact ARL Products, LLC, your local distributor.

Spigots are manufactured from 304L & 316L stainless Steel.

Surface finish is 32Ra.

Patent # 547189  
Design Patent # 407574

<b>ARL PRODUCTS LLC</b> 335 Pennbriht Dr #130, Houston, TX 77090 281-203-8577	REVISIONS				COPYRIGHT © 2014 The material and design information contained herein is exclusive property of ARLP. All partial or total reproductions are prohibited without a written notice from ARLP. All information is confidential and may not be used by or disclosed to unauthorized personnel without a written consent of ARL PRODUCTS, LLC.	CUSTOMER		
	NO.	BY	DESCRIPTION	DATE		APPROVED	<b>BFM SPIGOT</b> ARL PRODUCTS, LLC	
	1	RH	corrected mm measurements	02/19	HS	<b>SPIGOT DRAWING</b> BFM CONNECTOR		
	2	RH	updated in. measurements to match new mm	12/20	HS			
						ARL PRODUCTS PROJECT NO. XXX REFERENCE DWG. XXX CUSTOMER JOB/P.O. NO. XXX SCALE N/A SHEET 1 of 1		
						DRAWN BY HS DATE 2/17/2015 APPROVED BY TK DATE 2/17/2015		